

ALTERED:[®]

Altered:Nozzle Dual Flow Pro



The Altered:Nozzle Dual Flow Pro

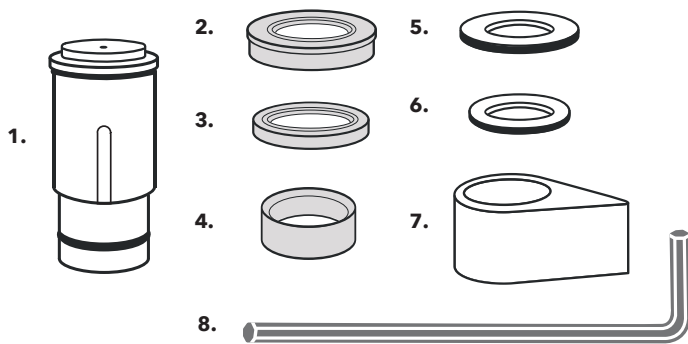
The Altered:Nozzle Dual Flow Pro is designed for everyday efficiency. That means saving water without wasting time or losing functionality. Experience mist with our patent pending atomization technology. Millions of droplets instantly drenching your hands. Making it possible to give you 98% less without loss.

Full functionality with our Spray Mode. If you need more, you got it. Just turn the handle and our spray mode will fill your glass instantly. Still 90% savings compared to regular taps, but all the water you need.

- » Pays for itself within months.
- » Retrofits into existing taps. Reducing cost.
- » One product – all taps. Adapters for all common tap sizes
- » Dual Flow - Bathroom and Kitchen
- » Simple 60 second installation



Specifications



In the Box:

- 1: Nozzle
- 2: Adapter (Standard)
- 3: Adapter (Junior)
- 4: Adapter (TomThumb)
- 5: Rubber/Metal Gasket (Standard)
- 6: Rubber/Metal Gasket (Junior)
- 7: Handle
- 8: Hex Key

Dimensions:

Fits Standard (20.8mm), Junior (18.1mm)
Tom Thumb (15mm) sized taps. (Inner socket dimension)

Material:

Lead Free Brass (Chromed handle)

Filter:

Metal Mesh 0.4mm

Water pressure:

29-116psi / 2–8bar
Not suitable for pressureless water systems.

Water temperature:

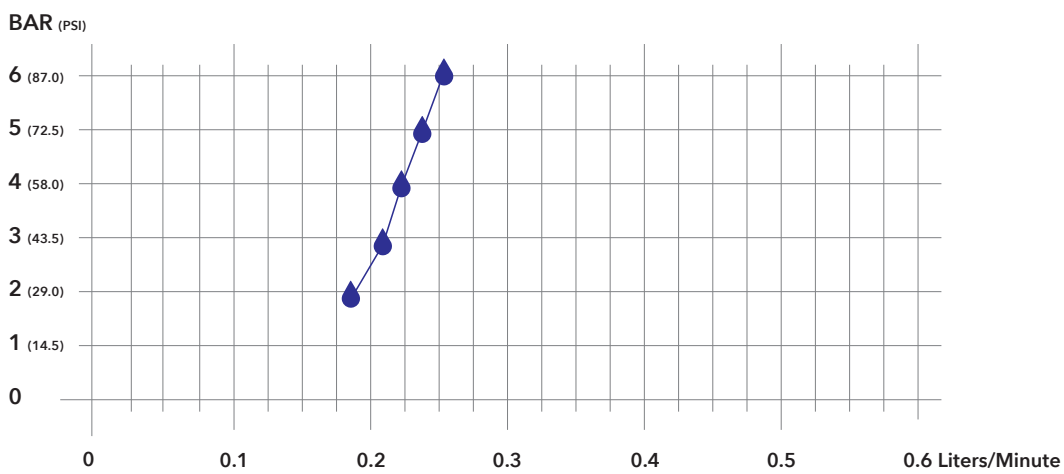
Max 192° F / 89° C

Flow Rate (3 BAR pressure):

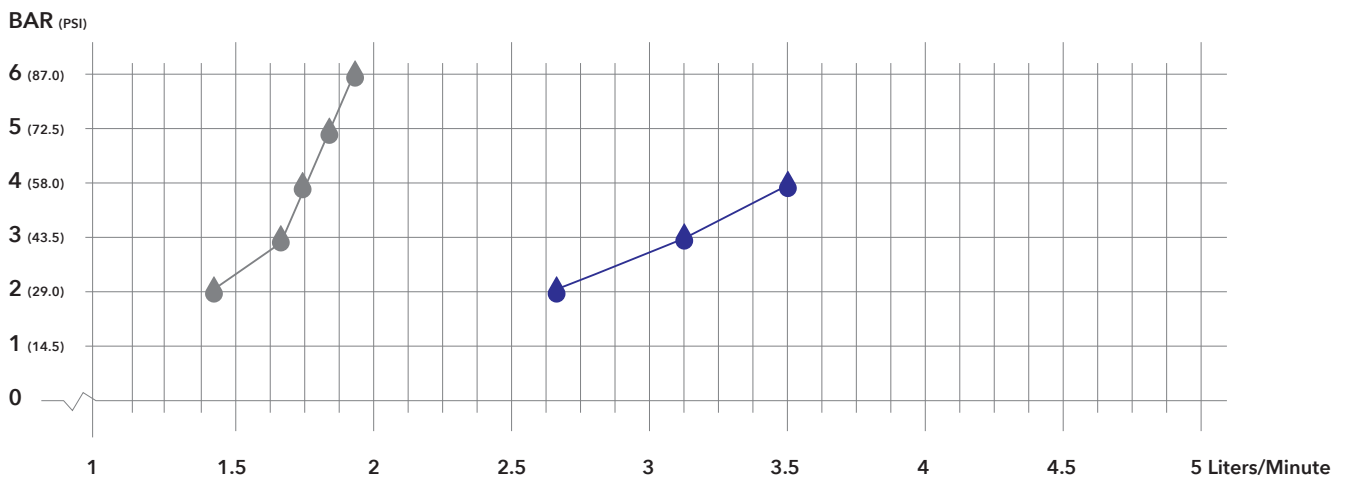
Mist Mode 0.21 liters/min.
Spray Mode 1.1 liters/min.
(Spray Mode 2.6 liters/min. removed restrictor plug)



Flow Rates Mist & Spray Mode



RESTRICTOR NO RESTRICTOR





Warranty

If you are not satisfied with the product or if the product is defective, take the product to the place of purchase. As a customer you must be able to confirm the time of purchase by presenting a receipt or a copy of the invoice for the delivery of the product in question. Altered products are under warranty for two (2) years from the date of purchase. The warranty applies only if the nozzle has been correctly installed and used.

The warranty does not cover damage from freezing or damage and functional defects arising from impurities in the water. Nor does the warranty apply for defects caused by improper cleaning (scrubbing or use of abrasive/corrosive cleansers). Defects from normal product wear, faulty installation, incorrect use, or failure to follow installation and service instructions shall not be compensated. The warranty does not cover costs for third parties or for any costs other than for the delivered product. Damages caused by stress corrosion as a result of water conditions or the surrounding environment, or because of faulty installation, shall not be included in product liability.

Cleaning and maintenance

Use a soft, damp cloth and a small amount of dishwashing liquid for daily cleaning or when needed. Never use abrasives, steel wool, or harsh cleansers (for example, for lime deposit removal or polishing, alkaline cleansers, or cleansers containing alcohol). Rinse with water and dry/polish with a clean, dry cloth. We also recommend that you remove the nozzle from the tap now and then and clean it thoroughly. If there are lime deposits on the nozzle, use a small amount of vinegar diluted with water to gently remove them. Rinse afterward using only water.

Installation must be performed in accordance with all applicable local regulations for building/construction and for water systems. If you are unsure, contact a professional. In all water systems, it is very important to ensure that hot and cold water maintain the correct temperatures and that the systems and its components have been correctly installed.